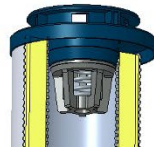
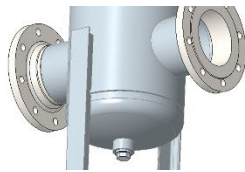
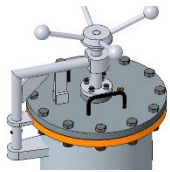


Inline filters are used in hydraulic systems for separating solid materials from the hydraulic fluids and lubricating oils. They are intended for attachment in pipelines.

Your product advantages: 16 FE



- Optical maintenance indicators
- Drain plug
- Bypass valve at highest position of filter cover (no gas / air accumulation)
- Optional vent valve from NG4000 upwards
- Optional from NG4000 lid lifting device